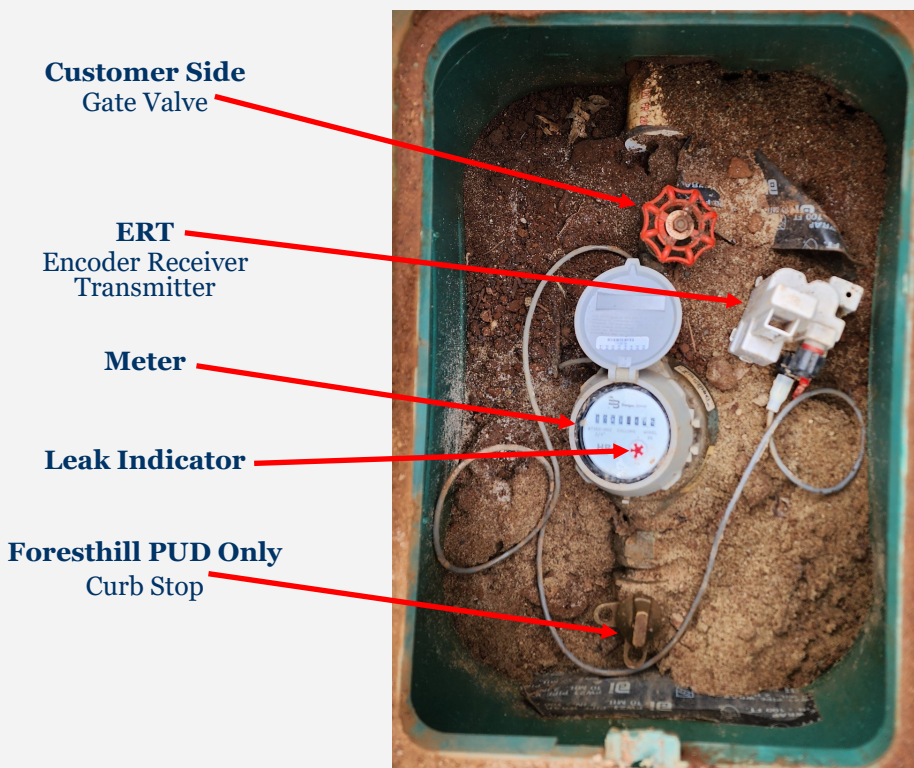




*Your local,
not-for-profit utility
district for 75 years*

Do You Know Where Your Meter is Located?



In case of a water leak or other water-related emergency, it is important to know where your meter is and what is inside it. Above, you will see an example of a customer's green plastic water meter box. A Gate Valve is a valve located on the customer's side of the meter that allows the customer to shut their water off at any time without having district personnel present. This valve is very helpful if you ever have a leak and need to make repairs.

In most cases for residential customers, the water meter is located at the front of the property near the street. If you do not have a gate valve, you or a plumber can install one. Please contact our office when you decide to have the water shut off for this gate valve installation. Operators can mark the meter location if you need further assistance.

Next Foresthill Meeting

Foresthill Elementary School
Wednesday, April
9th, 2025
at 6:00 P.M

Check your Foresthill website for an agenda which will be posted 72 hours before the meeting.

Water fun fact



75% of a living tree is made up of water.

Reservoir Updates



Rain Totals for the calendar year 2025 = 26.97"
Average year +/- 49"



Storage = 7,007 Acre Feet



February 2025 Foresthill delivered 13.6 million gallons to our community

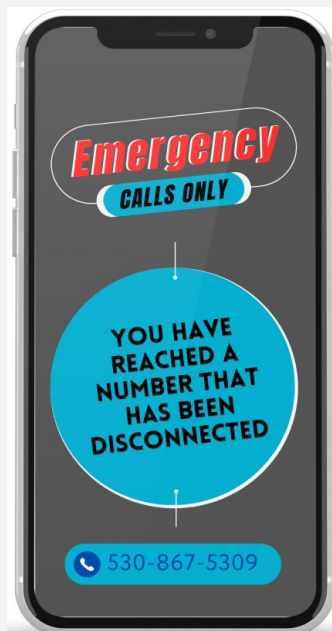


Supplied 43.2 Acre Feet



Reservoir currently 101% full

In case of an Emergency Shutdown or Other Water Emergencies What is the Best Way to Contact You?



Foresthill makes the necessary calls each month notifying customers of possible leaks, emergency shut-offs, and more. If your contact information changes, please contact us at customerservice@foresthillpud.com or call the office at (530) 367-2511.

Temetra on the Move in Foresthill



Operators have been hard at work fine-tuning the new meter reading software. Temetra is a drive-by meter reading software that gathers meter information by simply driving by the meter instead of taking a manual reading. This modern technology will save time in the field, reduce costs, and improve data collection.